



MERFORD

## Ergoseat-H



BalanSeat



Ergoseat-H



Ergoseat-S



Unimpaired view

Fully adjustable consoles

Upper body support

### Merford Cabins BV

Web address: [www.ergocab.com](http://www.ergocab.com)  
E-mail: [ergocab@merford.nl](mailto:ergocab@merford.nl)  
Phone: +31 184 606000  
Fax: +31 184 602794  
Country: The Netherlands

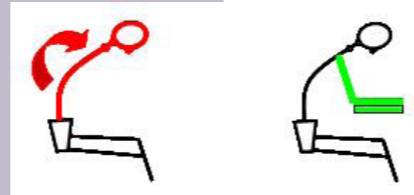
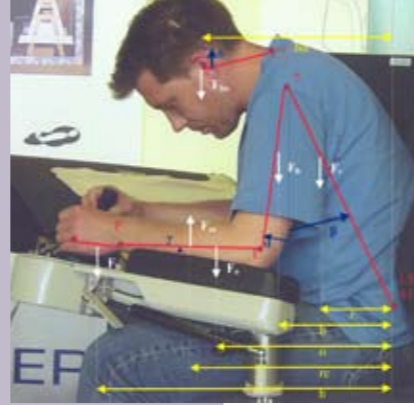
## Ergoseat-H

The Ergoseat-H is designed for operators looking downward. The seat provides an upper-body support by means of fully adjustable consoles (to unload the lower back, according to ISO 11226) and makes it possible to vary position very easy.

The Ergoseat is provided with pneumatic / mechanical suspension and is designed for P5-P95 people worldwide.

The Ergoseat is ceiling-mounted to reduce unwanted movements through the cabin structure. This Ergoseat makes it possible to optimize the cab-floor design.

Due to the many and large adjustment possibilities the Ergoseat can be used for cabins with other view lines as well.



Many people around the world are sitting several hours a day without proper instructions and tools. Because of this, many of them suffer from back or neck problems.

This is especially the case for crane operators looking downwards and possibly sitting in a moving environment. It is clear that this can result in fatigue, physical complaints, loss of efficiency and in extreme cases this situation may contribute to an unsafe environment.

The Ergoseat provides a unique suspension system for both the seat and the consoles and supports the upper body which takes pressure off the the lower back of the crane operator in case of shock or aft-forward movements. Studies have shown that using the Ergoseat-H has reduced lower back problems 50,5%. This in turn reduces the rate of absenteeism.



Seat-type	Ergoseat	
	Standing	Hanging
<b>Seat</b>		
Fabric Upholstery Blue	S	S
Forward - Backward Adjustment Cushion	S	S
Height Adjustment Backrest	S	S
Adjustable Lumbar Support	S	S
Inclination Adjustment Backrest	S	S
Tilt Adjustment Seat	S	S
Forward - Backward Adjustment Seat	S	S
Weight / Suspension Adjustment Mechanical / Manual	X	X
Weight / Suspension Adjustment Pneumatic / Electric	S	S
Head Rest	S	S
Armrests, simple fixed to seat	X	X
Armrests, heavy duty	S	S
V-cut in Cushion	S	S
Pressure Switch in Cushion	O	O
Leather Upholstery	O	O
Merford Dynamic Seat	O	O
2-Point Safety Belt	S	S
4-point Safety Belt	O	O
<b>Console</b>		
Console Width 200 mm	S	S
Console Width 240 mm	Acc. To Drawing	Acc. To Drawing
Console Width 320 mm	Acc. To Drawing	Acc. To Drawing
Consoles Forward - Backward	S	S
Consoles Up- Down	S	S
Consoles Rotatable	S	S
Consoles Tilt adjustable	S	S
Consoles Frontpart Slant	X	X
Blind Topplates	S	S
Pre-Drilled Topplates	O	O
Text Plates	O	O
<b>Extra's</b>		
Height Adjustment Total Arrangement	200 mm	200 mm
Junction box	S	X
Steel parts RAL 7015, structure surface	S	S
Steel Parts Specific RAL colour	O	O
Rotation Table	O	O
Fun Radio	X	X
Heating Furnaces	X	X
Swiveling Panel LH side	O	O
Swiveling Panel RH side	O	O
User and Maintenance Manual	S	S
Control Components	Quotation	Quotation